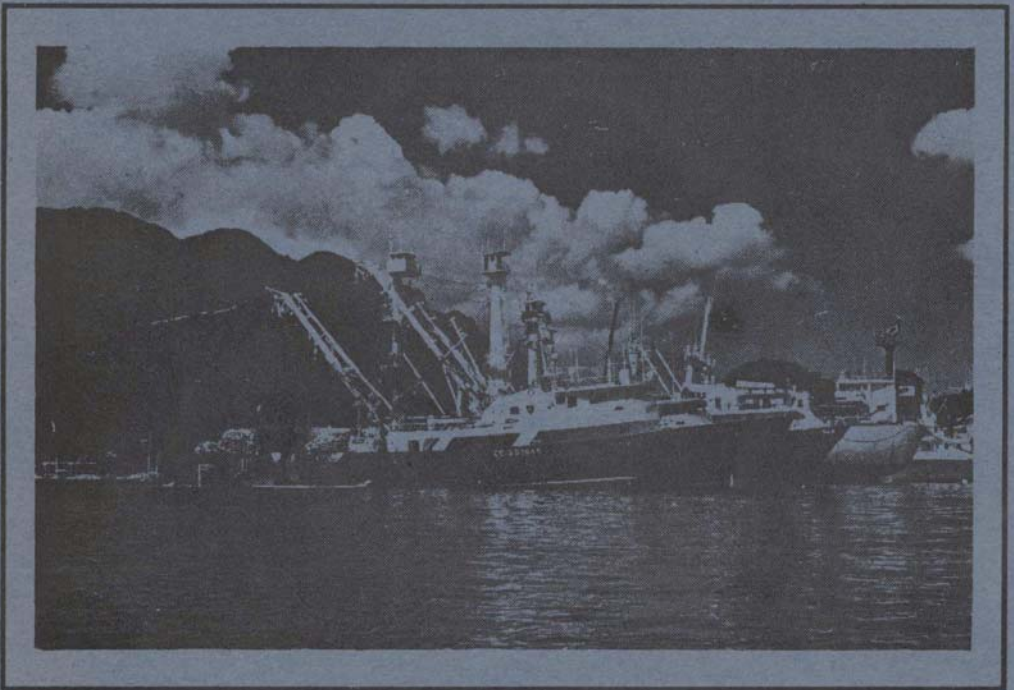




SEYCHELLES FISHING AUTHORITY

TUNA BULLETIN



First Semester 2006

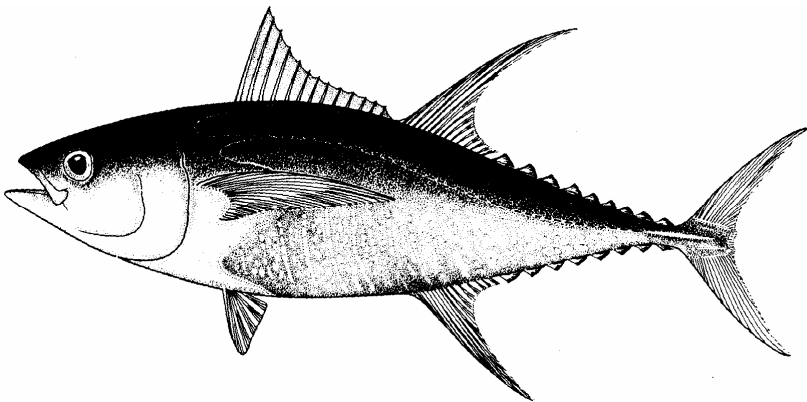


SEYCHELLES FISHING AUTHORITY

P.O. Box 449
Fishing Port
Mahé
Seychelles
Tel: 248 670300
Fax: 248 224508
email: management@sfa.sc
Website: www.sfa.sc

SEYCHELLES TUNA BULLETIN

First Semester 2006



Prepared by: SEYCHELLES FISHING AUTHORITY

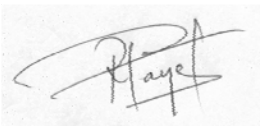
SEYCHELLES FISHING AUTHORITY

The Seychelles Fishing Authority (SFA) was incorporated in August 1984 by the Seychelles Fishing Authority (Establishment) Act. This body was formed in view of the need to develop the fishing industry to its fullest potential. It is a parastatal organisation with autonomous legal and financial status, supervised by a board of directors appointed by the President.

The Ministry of Environment and Natural Resources is responsible for policy directives in fisheries related matters, and SFA is the executive arm of the government in all fisheries activities. Responsibilities include:

- assessment and management of the fisheries resources;
- assistance in conducting negotiations with foreign fishing fleet operators;
- coordination and support of fishing ventures and owner/operators;
- management of the fishing port;
- development of gear technology;
- coordination of manpower training in the fishing sector;

This volume of the Tuna Bulletin contains fisheries statistics in the Western Indian Ocean (WIO) reported by purse seiners licensed to fish inside of the Seychelles EEZ for year 2005 and first semester of 2006. For longliners also licensed to operate in the Seychelles EEZ, only catch statistics for the year 2004 and first semester of 2005 have been incorporated in this volume. It must be noted that the longliners figures for the first semester 2005 are still preliminary since the logbook returns were still low at the close of the database.

A handwritten signature in black ink, appearing to read 'Payet', is written over a light-colored rectangular background.

Randolph Payet
Managing Director

SUMMARY

Data used to generate the tables and figures presented here are based on daily catch and effort forms (logbooks) returned from fishing vessels that are licensed to fish in the Seychelles EEZ and for purse seiners, as well as from data collected via the tuna sampling programme conducted during transshipment in Port Victoria. Sometimes there are delays in these being received at SFA, especially for longliners that often spend up to a year at sea. For purse seiners the delays are usually during and just after the second quarter of the year when most vessels are fishing in the Mozambique Channel and are not necessarily using Port Victoria for transshipment.

Readers should note that many of the figures presented here are subject to revision (usually upwards) as more data become available. The closing date for compilation of data prior to the generation of the statistical tables is shown at the head of each table.

PURSE SEINERS

PRINCIPAL POINTS

- The total catch reported by purse seiners licensed in Seychelles during the whole of 2005 is estimated at 389, 256 MT. This was achieved by an average of 46 vessels active per month. The fishing effort recorded during 2005 was 13,353 fishing days with a mean catch rate of 29.15 MT/fishing day. The 2005 catch is the second highest annual catch reported to date, second only to the record catch of 408, 366 MT recorded in 2003.
- The purse seine tuna catch reported for the Western Indian Ocean during the first semester of 2006 was 150,363MT achieved by an average of 48 vessels active per month. The total effort reported for the purse seine tuna fleet was 7,016 days, thus giving a mean catch rate of 21.43 MT/fishing day.
- For the same period in 2004, the total catch reported was 160,711 MT with an average catch rate of 24.72 MT/fishing day. The total effort reported during the first semester of 2005 was 6,501 days. This shows a decrease of 6% in the total catch reported during the first semester of 2006 despite an increase of 8% reported in fishing effort.

Table I. Species composition of the total catch reported for the first semester of 2005 and 2006.

SPECIES	2005	%	2006	%
YELLOWFIN (<i>Thunnus albacares</i>)	78,745	49	76,730	51
SKIPJACK (<i>Katsuwonus pelamis</i>)	73,224	46	62,944	42
BIGEYE (<i>Thunnus obesus</i>)	8,224	5	9,220	6
OTHERS	518	<1	1,469	1
TOTAL	160,711		150,363	

- During the first semester of 2006, yellowfin tuna dominated the catch accounting for 51% of the total catch. However, both yellowfin and skipjack tuna catches dropped by 3% and 14 % respectively, over the catches of the same period in 2005.

Readers should note that the catch composition recorded by fishermen in their daily catch and effort reports were corrected based on scientific sampling carried out during transshipment or landing in Port Victoria.

1. Table 3 shows purse seine transshipment or landing statistics by harbour.
 2. It should be noted that the figures represent the transshipment or landing of vessels whose trips ENDED in the month indicated and NOT the actual month of physical transshipment or landing of the catch.
- For the whole year of 2005, a total of 339,686 MT of tuna was unloaded through Port Victoria representing 87% of the total catch.
 - During the first semester of 2006, transshipment and landing through Port Victoria amounted to 141,523 MT representing 94% of the total catch. For the same period in 2005 a total of 125,765 MT was unloaded in Port Victoria. This represents an increase of 13% recorded during the first semester of 2006.
 - Map 4, which shows fishing grounds exploited during first semester of 2006 indicates a slight decrease in activities in the Mozambique Channel and an increase in activities in the Somalia Basin area when compared to the same period, the previous year.

LONGLINERS

PRINCIPAL POINTS

Readers should be aware that the longliner statistics represent only a small sample of longliners' activity in the WIO because:

- Not all longliners in the WIO have a licence to fish in the Seychelles EEZ and therefore are under no obligation to report to SFA.
- Some Distant Water Fishing Nations (DWFN) provide SFA with log sheets covering their activity in the whole Indian Ocean while others confine their reports to the Seychelles EEZ.

The statistics published for 2004 are related to 1275 logbooks (months) received at the time when those statistical tables were generated. A total of 333 licenses were issued to 244 vessels. During the first semester of 2005, a total of 293 logbooks (months) were received, for the 157 licences issued to 106 vessels.

Since the duration of licences can vary from one month to twelve months, for comparison purposes, each month covered in a logbook was considered as one logbook.

Analysis of data collected to date show that:

- The total catch reported for the whole year 2004 was 21,336 MT obtained from a fishing effort of approximately 44.7 million hooks. The catch rate reported was 0.48 MT/1000 hooks.
- For the first semester of 2005, a total catch of 10,302 MT was reported. This was achieved from a fishing effort of approximately 13.3 million hooks giving a mean catch rate of 0.8 MT/1000 hooks.
- For the first semester of 2004, a total catch of 9,860 MT was reported. This was achieved from a fishing effort of approximately 19.6 million hooks giving a mean catch rate of 0.5 MT/1000 hooks.

Table II. Species composition of the total catch reported for the first semester of 2004 and 2005.

SPECIES	2004	%	2005	%
YELLOWFIN (<i>Thunnus albacares</i>)	4,412	45	6,608	64
BIGEYE (<i>Thunnus obesus</i>)	3,940	40	2,900	28
SWORDFISH (<i>Xiphias gladius</i>)	912	9	509	5
OTHERS	596	6	285	3
TOTAL	9,860		10,302	

- During the first semester of 2005 yellowfin tuna dominated the catch accounting for 64% of the total catch, with bigeye tuna (*Thunnus obesus*) making up 28%, and swordfish some 5% .
- For the same period of 2004, yellowfin tuna made up 45% of the total catch whilst bigeye tuna and swordfish accounted for 40% and 9% of the total catch respectively.

RESUME

Les données utilisées pour produire les tableaux et figures ici présentés proviennent des livres de bord remplis quotidiennement par les navires disposant de licences pour la ZEE des Seychelles ainsi que de l'échantillonnage des captures effectuées lors du débarquement des prises au port de Victoria. Il peut y avoir parfois un délai dans la remise de ces données à la SFA, spécialement pour les palangriers qui passent souvent plus d'un an en mer et pour les senneurs, pendant et juste après le deuxième trimestre de l'année, alors que de nombreux navires pêchent dans le canal du Mozambique et ne débarquent pas forcément à Victoria.

Les lecteurs sont donc avisés que les chiffres présentés ici sont sujets à révision (habituellement à la hausse) selon l'arrivée de données complémentaires. La date à laquelle la base de données SFA est fermée pour la génération des tableaux est désormais indiquée en tête de chaque tableau.

SENNEURS

POINTS PRINCIPAUX

- La prise totale enregistrée dans l'Océan Indien Occidental (OIO) par les senneurs avec licence de pêche pour la ZEE des Seychelles pour l'année 2005 est de 389 256 t, résultant de l'activité de 46 navires actifs par mois en moyenne. L'effort de pêche total de la flotte des senneurs en 2005 s'est élevé à 13 353 jours de pêche, soit un rendement de 29.15 t/jour de pêche. Les captures de 2005 sont les deuxièmes plus importantes à ce jour après le record de 408 366t enregistré en 2003.
- La prise totale des senneurs dans l'OIO au cours du premier semestre de l'année 2006 s'élève à 150 363t résultant de l'activité de 48 navires actifs par mois en moyenne. L'effort total enregistré pour les senneurs est de 7 016 jours, avec un taux de captures de 21.43t/jour.
- Pour la même période en 2004, les captures totales enregistrées étaient de 160 711t avec un rendement moyen de 24.72t/jour de pêche. L'effort total reporté en 2005 était de 6 501 jours. Ceci montre donc une réduction d'environ 6% des captures totales enregistrées pour le premier semestre 2006 malgré une augmentation de l'effort de pêche de 8%.

Tableau I. Composition spécifique de la prise totale enregistrée au cours des premiers semestres 2005 et 2006.

ESPECES	2005	%	2006	%
ALBACORE (<i>Thunnus albacares</i>)	78 745	49	76 730	51
LISTAO (<i>Katsuwonus pelamis</i>)	73 224	46	62 944	42
PATUDO (<i>Thunnus obesus</i>)	8 224	5	9 220	6
AUTRES	518	<1	1 469	1
TOTAL	160 711		150 363	

- Au cours du premier semestre 2006, le thon albacore (*Thunnus albacares*) est l'espèce majoritairement capturée (51 % des captures totales). Cependant les captures de thon albacore et de listao (*Katsuwonus pelamis*) ont diminué de 3% et 14% respectivement par rapport aux captures de l'année précédente à la même période.

Les lecteurs doivent être avisés que la composition spécifique des captures indiquée par les pêcheurs ainsi que les efforts ont été corrigés à partir de l'échantillonnage scientifique des prises fait au débarquement.

1. Le tableau 3 indique les statistiques des transbordements et débarquements des senneurs par port.
 2. Il doit être signalé que les chiffres représentent les transbordements et débarquements des navires dont les marées se sont achevées durant le mois spécifié, et non durant le mois du transbordement effectif des prises.
- Pour l'année 2005, un total de 339 686t de thons a été débarqué dans le port de Victoria soit 87% des captures totales.
 - Durant le premier semestre de l'année 2006, les débarquements et transbordements de thons au port de victoria s'élèvent à 141 523t soit 94% des captures totales. Pour la même période en 2005, un total de 125 765t a été débarqué. Ceci implique donc pour 2006 une augmentation de 13% des captures débarquées au premier semestre 2005.
 - La carte 4, représentant les zones de pêches exploitées pendant le premier semestre 2006, montre une importante diminution des activités dans le canal du Mozambique et une augmentation de la fréquentation du bassin somalien en comparaison avec le premier semestre 2005.

PALANGRIERS

POINTS PRINCIPAUX

Les lecteurs doivent être avisés que les statistiques de pêche à la palangre ne reflètent qu'une faible part de l'activité réelle occurrente dans l'OIO pour les raisons ci dessous:

- Tous les palangriers ne possèdent pas une licence pour pêcher dans la ZEE des Seychelles et donc ne sont pas tenus de reporter leurs captures à la SFA
- Certains pays qui pratiquent la pêche lointaine fournissent à la SFA des livres de bord couvrant leurs activités sur l'ensemble de l'Océan Indien alors que d'autres se limitent à celles ayant lieu dans la ZEE des Seychelles

Les statistiques publiées en 2004 proviennent de 1275 livres de bord (mois) reçus au moment de la génération des tables statistiques. Au total 333 licences ont été attribuées à 244 bateaux. Au cours du premier semestre 2005, un total de 293 livres de bord (mois) a été reçu, pour les 157 licences délivrées à 106 bateaux.

La durée des licences variant d'un mois à un an, chaque mois reporté dans un livre de bord compte pour un livre de bord, ceci facilitant les comparaisons.

L'analyse des données collectées à ce jour montre que:

- Les prises des palangriers reportées à la SFA pour l'année 2004 sont estimées à 21 336 t. Ces prises correspondent à un effort de pêche de 44.7 millions d'hameçons soit une Prise par Unité d'Effort (PUE) moyenne de 0,48 t/ 1000 hameçons.
- Pour le premier semestre 2005, une prise totale de 10 302t a été enregistrée. Ce niveau de prises correspond à un effort de pêche d'environ 13.3 millions d'hameçons soit une PUE de 0,8 t/1000 hameçons.
- Au cours du premier semestre 2004, une prise totale de 9 860t a été enregistrée avec un effort de pêche de 19.6 millions d'hameçons soit une PUE de 0.5t/1000 hameçons.

Tableau II. Composition spécifique de la prise totale enregistrée au cours des premiers semestres 2004 et 2005.

ESPECES	2004	%	2005	%
ALBACORE (<i>Thunnus albacares</i>)	4 412	45	6 608	64
PATUDO (<i>Thunnus obesus</i>)	3 940	40	2 900	28
ESPADON (<i>Xiphias gladius</i>)	912	9	509	5
AUTRES	596	6	285	3
TOTAL	9 860		10 302	

- Au cours du premier semestre 2005, le thon albacore (*Thunnus albacares*) est l'espèce dominante dans les captures représentant un pourcentage de 64% tandis que le thon obèse (*Thunnus obesus*) représente 28% des captures totales et l'espadon (*Xiphias gladius*) environ 4%.
- Pour la même période en 2004, le thon albacore représentait 44% des captures totales tandis que le thon obèse et l'espadon représentaient respectivement 39% et 9%.

RESUMEN

Los datos utilizados para generar las tablas y figuras que aquí se presentan están basados en los formularios de captura y esfuerzo diarios (cuadernos de pesca) entregados por los barcos pesqueros que tienen licencia para pescar en la ZEE (Zona Económica Exclusiva) de Seychelles y en los datos recogidos por el programa de muestreo de atunes desarrollado durante los transbordos en Puerto Victoria. En ocasiones se produce algún retraso en la recepción de estos cuadernos de pesca por parte de la SFA (Seychelles Fishing Authority), especialmente en el caso de los palangreros que a menudo pasan hasta un año sin tocar puerto. Para los cerqueros los retrasos se producen generalmente durante y justo después del segundo trimestre del año, cuando la mayoría de los barcos faenan en aguas del Canal de Mozambique y a veces no utilizan el puerto de Victoria para los transbordos.

Los lectores deben tener en cuenta que muchas de las cifras aquí presentadas están sujetas a revisión (generalmente aumentando) según va habiendo más datos disponibles. La fecha en la que se finaliza la recopilación de datos previa a la generación de las tablas estadísticas se muestra en la cabecera de cada tabla.

CERQUEROS

PUNTOS PRINCIPALES

- La captura total reportada por cerqueros con licencia para pescar en la ZEE de Seychelles en 2005 se estima en 389.256 toneladas. Esta captura fue obtenida por una media de 46 barcos activos por mes. El esfuerzo de pesca registrado durante 2005 fue 13.353 días de pesca, con un rendimiento medio de 29,15 toneladas por día de pesca. La captura de 2005 es la segunda captura anual más alta reportada hasta la fecha, después de la captura record de 408.366 toneladas que se registró en 2003.
- La captura de atún de cerco reportada para el Océano Índico Occidental durante el primer semestre de 2006 fue 150.363 toneladas que fueron capturadas por una media de 48 barcos activos por mes. El esfuerzo total reportado por la flota cerquera atunera fue 7.016 días, lo que da un rendimiento medio de 21,43 toneladas por día de pesca.

Para el mismo periodo de 2004 la captura total reportada fue 160.711 toneladas con un rendimiento medio de 24,72 toneladas por día de pesca. El esfuerzo total reportado durante el primer semestre de 2005 fue 6.501 días. Lo anterior muestra una disminución de un 6% en la captura total reportada durante el primer semestre de 2006 a pesar de que el esfuerzo de pesca se incrementó en un 8%.

Tabla I. Composición por especies de la captura total reportada para el primer semestre de 2004 y 2005.

ESPECIE	2005	%	2006	%
RABIL (<i>Thunnus albacares</i>)	78.745	49	76.730	51
LISTADO (<i>Katsuwonus pelamis</i>)	73.224	46	62.944	42
PATUDO (<i>Thunnus obesus</i>)	8.224	5	9.220	6
OTRAS	518	<1	1.469	1
TOTAL	160.711		150.363	

- Durante el primer semestre de 2006 el rabil fue la especie dominante en las capturas contabilizando un 51% de la captura total. Sin embargo, las capturas de rabil y listado disminuyeron en un 3% y 14% respectivamente con relación a la capturas del mismo periodo de 2005.

Los lectores deben tener presente que la composición de las capturas registradas por los pescadores en sus informes diarios de captura y esfuerzo fueron corregidas en base a los muestreos científicos realizados durante los transbordos y descargas efectuados en Puerto Victoria.

1. La Tabla 3 muestra las estadísticas de transbordos y descargas por puerto de los cerqueros.
 2. Se debe tener en cuenta que las cifras representan los transbordos o descargas de los barcos cuyas mareas TERMINARON en el mes indicado y NO el mes en el que de hecho se realiza el transbordo o descarga de la captura.
- Para todo el 2005 se descargaron en Puerto Victoria un total de 339.686 toneladas de atún, lo que representa un 87% de la captura total.
 - Durante el primer semestre de 2006 los transbordos y descargas efectuados en Puerto Victoria sumaron 141.523 toneladas, lo que representa un 94% de la el primer semestre de 2006.

- El Mapa 4, que muestra las zonas de pesca explotadas durante el primer semestre de 2006, indica una ligera disminución de actividad en el Canal de Mozambique y un incremento de actividad en la zona de Somalia cuando se compara con el mismo periodo del año anterior.

PALANGREROS

PUNTOS PRINCIPALES

Los lectores deben tener presente que las estadísticas de palangre solo representan una pequeña muestra de la actividad de los palangreros en el Océano Índico Occidental ya que:

- No todos los palangreros faenando en el Océano Índico Occidental tienen licencia para pescar en la ZEE de Seychelles y por tanto no tienen obligación de reportar a la SFA.
- Algunos países entregan a la SFA cuadernos de pesca que cubren su actividad en todo el océano Índico mientras otros limitan sus reportes a la ZEE de Seychelles.

Las estadísticas publicadas para 2004 provienen de los 1.275 cuadernos de pesca (meses) que se recibieron antes de la generación de las tablas estadísticas. Se expidieron un total de 333 licencias a 244 barcos. Durante el primer semestre de 2005 se recibieron un total de 293 cuadernos de pesca (meses), de las 157 licencias expedidas a 106 barcos.

Teniendo en cuenta que la duración de las licencias puede variar entre uno y doce meses y por motivos de comparación, cada mes cubierto en un cuaderno de pesca se considera como un cuaderno de pesca.

El análisis de los datos recogidos hasta el presente muestra que:

- La captura total reportada para todo el año 2004 fue 21.336 toneladas, obtenidas con un esfuerzo de pesca de aproximadamente 44,7 millones de anzuelos. El rendimiento reportado fue de 0,48 toneladas por cada 1000 anzuelos.
- Para el primer semestre de 2005 la captura total reportada fue de 10.302 toneladas. Esto se consiguió con un esfuerzo de pesca de aproximadamente 13,3 millones de anzuelos dando un rendimiento medio de 0,8 toneladas por cada 1.000 anzuelos.
- Para el primer semestre de 2004 se reportó una captura de 9.860 toneladas.

Lo que se obtuvo con un esfuerzo de pesca de aproximadamente 19,6 millones de anzuelos dando un rendimiento medio de 0,5 toneladas por cada 1.000 anzuelos.

Tabla I. Composición por especies de la captura total reportada para el primer semestre de 2004 y 2005.

ESPECIE	2004	%	2005	%
RABIL (<i>Thunnus albacares</i>)	4.412	45	6.608	64
PATUDO (<i>Thunnus obesus</i>)	3.940	40	2.900	28
ESPADA (<i>Xiphias gladius</i>)	912	9	509	5
OTRAS	596	6	285	3
TOTAL	9.860		10.302	

- Durante el primer semestre de 2005 el rabil fue la especie mas abundante en la captura alcanzando un 64% de la captura total, el patudo (*Thunnus obesus*) supuso un 28%, y el pez espada alrededor del 4%.
- Para el mismo periodo de 2004, el rabil totalizo un 44% de la captura total mientras que el patudo y el pez espada supusieron un 39% y un 9% respectivamente de la captura total.

Definitions of terms used

TERMS	DEFINITION
VESSELS LICENSED	Vessels licensed to fish in the Seychelles EEZ.
VESSELS FISHED	Vessels whose logbook has been received at SFA and which contains at least one DAY FISHED for the month in question.
VESSELS COVERED	Vessels for which a logbook has been received containing at least one fishing day during the month; or a vessel that is not fishing yet the SFA knows of its activities.
FISHING DAYS	Days spent at sea minus days on passage, days adrift due to mechanical breakdown or other work stoppage. This may include days spent in searching even if no fish was actually caught or days spent drifting by flotsam or fish aggregating devices (FADs).
CATCH	MT - Metric Tonne (1000 kg)
CATCH RATE - Purse seine	Metric Tonne per fishing day
CATCH RATE - Longline	Metric tonne/1000 hooks
TRANSSHIPMENT and LANDING	Generally the transfer of tuna fish from a catcher vessel to a 'reefer' or transport vessel. This normally takes place in port. This also includes fish landed in Port Victoria, Seychelles for the IOT canning factory. Most of this is subsequently re-exported.
COUNTRY OF REGISTRATION	Country in which ownership of the vessel is registered.
FLAG	Country and agreement under which the vessel is managed. Country and Flag are usually the same but can sometimes be different.

PURSE SEINERS

Table 1 shows the catch and effort statistics for all purse seiners combined. Table 2.1 shows statistics for the Spanish fleet, Table 2.2 shows statistics for the French fleet, Table 2.3 statistics for Seychelles fleet and Table 2.4 statistics for "Other" which represent the other nationalities combined. The "Vessels Licensed" may exceed the "Vessels Covered" column if vessels licensed to fish in a particular month have not reported their catch, for whatever reason, by the time the database was closed prior to generation of these tables. This closing date is shown in the heading of each table. If vessels, which have not fished in the Seychelles EEZ and are not licensed to do so, report fishing OUTSIDE the EEZ, then "Vessels Covered" may sometimes exceed "Vessels Licensed".

The total catch for each trip has been taken from records of transshipment and landings whenever complete unloading occurred in Seychelles or the record was otherwise available from another port; otherwise total catch has been estimated from logbooks containing daily catch and effort statistics. The species composition declared in the logbooks has been corrected based on data collected during the tuna-sampling program conducted during transshipment and landings in Port Victoria. Catches have been estimated in wet weight rather than dry weight.

- The Spanish fleet reported the highest amount of tuna caught during the first semester of 2006 with a reported catch of 74,007 MT. This represents an increase of 5% over the 70,674 MT reported during the same period the previous year.
- The French fleet recorded a 6% increase in their total catch during the first semester of 2006. A total catch of 48,412 MT was reported for that period compared to 45,600MT during the first semester of 2005.
- The Seychelles fleet reported a total catch of 24,508 MT representing a decrease of 39% over the 40,005 MT reported for the same period in 2005.
- The remaining 3,436 MT of tuna caught during the first semester of 2006 were taken by vessels from other countries. They have been classified as "Other". (See footnote of Table 6 for details).

TABLE 1. Catch Statistics for Purse Seiners in the Western Indian Ocean
Database closed on 01/11/06
(Units: catch MT, percentages in brackets, catch rates MT/fishing day)

Year: 2005

MONTH	VESSELS LICENSED	VESSELS COVERED	DAYS FISHED	CATCH RATE	YELLOWFIN	SKIPJACK	BIGEYE	ALBACORE	TOTAL	CUMUL TOTAL	
Jan	52	45	1189	28.12	25031(75)	6596(20)	1752(5)	24(0)	33430	33430	
Feb	49	45	984	44.07	31328(72)	9540(22)	2429(6)	31(0)	43365	76795	
Mar	49	46	1069	24.72	6423(24)	17853(68)	1941(7)	44(0)	26428	103223	
Apr	49	47	1100	18.43	4295(21)	14937(74)	1006(5)	0(0)	20278	123501	
May	49	47	1074	22.44	4395(18)	18955(79)	623(3)	1(0)	24100	147601	
Jun	49	45	1085	12.08	7273(55)	5343(41)	473(4)	10(0)	13110	160711	
Jul	49	46	1217	23.97	15846(54)	11309(39)	1982(7)	23(0)	29172	189883	
Aug	49	46	1169	34.77	12238(30)	25929(64)	2204(5)	0(0)	40648	230531	
Sep	48	47	1152	39.40	20290(45)	22187(49)	2831(6)	4(0)	45387	275918	
Oct	48	47	1094	51.01	17674(32)	34382(62)	3645(7)	0(0)	55804	331722	
Nov	48	46	964	42.21	20379(50)	17857(44)	2457(6)	0(0)	40694	372416	
Dec	48	45	1256	13.41	11151(66)	5162(31)	504(3)	7(0)	16840	389256	
					13353	29.15	176323(45)	190050(48)	21847(5)	144(0)	389256

Year: 2006

MONTH	VESSELS LICENSED	VESSELS COVERED	DAYS FISHED	CATCH RATE	YELLOWFIN	SKIPJACK	BIGEYE	ALBACORE	TOTAL	CUMUL TOTAL	
Jan	52	47	1223	28.25	28414(82)	4566(13)	1264(4)	300(1)	34545	34545	
Feb	51	49	1163	24.42	19521(69)	6409(23)	1856(7)	586(2)	28406	62951	
Mar	51	47	1168	28.91	12097(36)	18917(56)	2480(7)	56(0)	33764	96715	
Apr	52	48	1117	18.38	5656(28)	13722(67)	1059(5)	0(0)	20534	117249	
May	52	47	1179	13.70	1371(8)	14313(89)	464(3)	0(0)	16153	133402	
Jun	52	48	1166	14.55	9671(57)	5017(30)	2097(12)	164(1)	16961	150363	
					7016	21.43	76730(51)	62944(41)	9220(6)	1106(0)	150363

TABLE 2. 1. Statistics for Purse Seiners in the Western Indian Ocean by Country
 Database closed on 01/11/06
 (Units: catch MT, percentages in brackets, catch rates MT/fishing day)

Country: SPAIN

Year: 2005

MONTH	VESSELS LICENSED	VESSELS COVERED	DAYS FISHED	CATCH RATE	YELLOWFIN	SKIPJACK	BIGEYE	ALBACORE	TOTAL	CUMUL TOTAL	
Jan	22	19	521	26.62	10635(77)	2481(18)	737(5)	9(0)	13870	13870	
Feb	20	19	439	45.28	14083(71)	4646(23)	1112(6)	0(0)	19876	33746	
Mar	20	20	416	27.67	2493(22)	8185(71)	768(7)	0(0)	11511	45257	
Apr	20	20	427	19.14	1624(20)	6128(75)	390(5)	0(0)	8172	53429	
May	20	20	491	23.99	2072(18)	9433(80)	267(2)	1(0)	11781	65210	
Jun	20	20	531	10.29	2246(41)	2970(54)	241(4)	2(0)	5464	70674	
Jul	20	20	543	27.52	7632(51)	6208(42)	1083(7)	9(0)	14941	85615	
Aug	20	20	520	38.78	5422(27)	13561(67)	1112(6)	0(0)	20167	105782	
Sep	20	20	518	41.49	8662(40)	11598(54)	1213(6)	4(0)	21492	127274	
Oct	20	20	506	53.86	6960(26)	18721(69)	1536(6)	0(0)	27252	154526	
Nov	20	20	424	49.46	10094(48)	9693(46)	1185(6)	0(0)	20972	175498	
Dec	20	20	576	11.80	4261(63)	2310(34)	221(3)	3(0)	6797	182295	
				5912	30.83	76184(41)	95934(52)	9865(5)	28(0)	182295	

Country: SPAIN

Year: 2006

MONTH	VESSELS LICENSED	VESSELS COVERED	DAYS FISHED	CATCH RATE	YELLOWFIN	SKIPJACK	BIGEYE	ALBACORE	TOTAL	CUMUL TOTAL	
Jan	22	20	570	27.14	12500(81)	2277(15)	640(4)	51(0)	15469	15469	
Feb	22	21	524	25.27	8731(66)	3328(25)	993(7)	170(1)	13242	28711	
Mar	22	21	550	33.30	5778(32)	11126(61)	1300(7)	0(0)	18314	47025	
Apr	22	21	510	20.69	2071(20)	7880(75)	576(5)	0(0)	10550	57575	
May	22	22	528	13.90	778(11)	6293(86)	264(4)	0(0)	7339	64914	
Jun	22	21	538	16.90	4900(54)	2779(31)	1354(15)	53(1)	9093	74007	
				3220	22.98	34758(46)	33683(45)	5127(6)	274(0)	74007	

TABLE 2.2 Statistics for Purse Seiners in the Western Indian Ocean by Country
 Database closed on 01/11/06
 (Units: catch MT, percentages in brackets, catch rates MT/fishing day)

Country: FRANCE Year: 2005

MONTH	VESSELS LICENSED	VESSELS COVERED	DAYS FISHED	CATCH RATE	YELLOWFIN	SKIPJACK	BIGEYE	ALBACORE	TOTAL	CUMUL TOTAL	
Jan	17	14	339	26.77	7453(82)	1226(14)	395(4)	0(0)	9075	9075	
Feb	16	14	290	37.32	7976(74)	2223(21)	601(6)	23(0)	10823	19898	
Mar	16	14	370	21.94	2324(29)	5071(62)	677(8)	44(1)	8116	28014	
Apr	16	14	368	20.24	1719(23)	5331(72)	399(5)	0(0)	7448	35462	
May	16	14	273	21.52	1041(18)	4638(79)	196(3)	0(0)	5875	41337	
Jun	16	13	276	15.45	3230(76)	931(22)	92(2)	5(0)	4263	45600	
Jul	16	13	310	23.63	4463(61)	2379(32)	469(6)	10(0)	7324	52924	
Aug	16	13	321	32.93	3744(35)	6083(58)	576(5)	0(0)	10569	63493	
Sep	16	15	334	39.89	7619(57)	4719(35)	984(7)	0(0)	13322	76815	
Oct	16	15	309	46.71	6680(46)	6469(45)	1283(9)	0(0)	14432	91247	
Nov	16	14	272	37.11	6315(63)	3090(31)	688(7)	0(0)	10093	101340	
Dec	16	14	384	15.27	4763(81)	923(16)	163(3)	4(0)	5863	107203	

					3846	27.87	57327(53)	43083(40)	6523(6)	86(0)	107203

Country: FRANCE Year: 2006

MONTH	VESSELS LICENSED	VESSELS COVERED	DAYS FISHED	CATCH RATE	YELLOWFIN	SKIPJACK	BIGEYE	ALBACORE	TOTAL	CUMUL TOTAL	
Jan	18	16	329	31.08	8611(84)	1038(10)	329(3)	246(2)	10224	10224	
Feb	17	17	404	22.98	6227(67)	2092(23)	561(6)	390(4)	9282	19506	
Mar	17	17	408	23.63	4495(47)	4334(45)	705(7)	56(1)	9641	29147	
Apr	17	17	378	19.05	3121(43)	3718(52)	324(4)	0(0)	7202	36349	
May	17	16	435	15.31	490(7)	6005(90)	167(3)	0(0)	6662	43011	
Jun	17	17	407	13.27	3503(65)	1461(27)	352(7)	81(1)	5401	48412	

					2361	20.50	26447(54)	18648(38)	2438(5)	773(1)	48412

TABLE 2.3. Statistics for Purse Seiners in the Western Indian Ocean by Country
Database closed on 01/11/06
(Units: catch MT, percentages in brackets, catch rates MT/fishing day)

Country: SEYCHELLES

Year: 2005

MONTH	VESSELS LICENSED	VESSELS COVERED	DAYS FISHED	CATCH RATE	YELLOWFIN	SKIPJACK	BIGEYE	ALBACORE	TOTAL	CUMUL TOTAL	
Jan	11	11	303	31.70	6155(64)	2821(29)	598(6)	14(0)	9606	9606	
Feb	11	11	237	50.65	8780(73)	2550(21)	674(6)	0(0)	12005	21611	
Mar	11	10	241	26.68	1514(24)	4385(68)	472(7)	0(0)	6430	28041	
Apr	11	11	254	15.11	821(21)	2825(74)	180(5)	0(0)	3837	31878	
May	11	11	254	22.00	1106(20)	4330(77)	132(2)	0(0)	5589	37467	
Jun	11	11	265	9.58	952(38)	1442(57)	140(6)	3(0)	2538	40005	
Jul	11	11	305	16.87	2734(53)	2061(40)	349(7)	0(0)	5144	45149	
Aug	11	11	279	31.36	2511(29)	5738(66)	480(5)	0(0)	8749	53898	
Sep	10	10	257	35.87	3116(34)	5545(60)	554(6)	0(0)	9219	63117	
Oct	10	10	240	54.52	3523(27)	8855(68)	638(5)	0(0)	13084	76201	
Nov	10	10	211	35.83	3474(46)	3620(48)	465(6)	0(0)	7560	83761	
Dec	10	9	246	15.35	1793(47)	1866(49)	112(3)	0(0)	3776	87537	
					3092	28.31	36479(41)	46038(52)	4794(5)	17(0)	87537

Country: SEYCHELLES

Year: 2006

MONTH	VESSELS LICENSED	VESSELS COVERED	DAYS FISHED	CATCH RATE	YELLOWFIN	SKIPJACK	BIGEYE	ALBACORE	TOTAL	CUMUL TOTAL	
Jan	10	9	265	28.86	6294(82)	1096(14)	255(3)	3(0)	7648	7648	
Feb	10	9	209	25.06	4032(77)	932(18)	272(5)	0(0)	5237	12885	
Mar	10	8	188	29.24	1740(32)	3259(59)	444(8)	0(0)	5497	18382	
Apr	11	9	199	12.67	406(16)	1930(77)	150(6)	0(0)	2521	20903	
May	11	8	188	6.63	32(3)	1197(96)	18(1)	0(0)	1247	22150	
Jun	11	9	197	11.97	1247(53)	700(30)	380(16)	30(1)	2358	24508	
					1246	19.67	13751(56)	9114(37)	1519(6)	33(0)	24508

TABLE 2. 4 Statistics for Purse Seiners in the Western Indian Ocean by Country
Database closed on 01/11/06
(Units: catch MT, percentages in brackets, catch rates MT/fishing day)

Country: OTHER COUNTRIES

Year: 2005

MONTH	VESSELS LICENSED	VESSELS COVERED	DAYS FISHED	CATCH RATE	YELLOWFIN	SKIPJACK	BIGEYE	ALBACORE	TOTAL	CUMUL TOTAL	
Jan	2	1	26	33.81	788(90)	68(8)	22(3)	1(0)	879	879	
Feb	2	1	18	36.72	489(74)	121(18)	42(6)	8(1)	661	1540	
Mar	2	2	42	8.83	92(25)	212(57)	24(6)	0(0)	371	1911	
Apr	2	2	51	16.10	131(16)	653(80)	37(5)	0(0)	821	2732	
May	2	2	56	15.27	176(21)	554(65)	28(3)	0(0)	855	3587	
Jun	2	1	13	65.00	845(100)	0(0)	0(0)	0(0)	845	4432	
Jul	2	2	59	29.88	1017(58)	661(37)	81(5)	4(0)	1763	6195	
Aug	2	2	49	23.73	561(48)	547(47)	36(3)	0(0)	1163	7358	
Sep	2	2	43	31.49	893(66)	325(24)	80(6)	0(0)	1354	8712	
Oct	2	2	39	26.56	511(49)	337(33)	188(18)	0(0)	1036	9748	
Nov	2	2	57	36.30	496(24)	1454(70)	119(6)	0(0)	2069	11817	
Dec	2	2	50	8.08	334(83)	63(16)	8(2)	0(0)	404	12221	
-----					503	24.30	6333(51)	4995(40)	665(5)	13(0)	12221

Country: OTHER COUNTRIES

Year: 2006

MONTH	VESSELS LICENSED	VESSELS COVERED	DAYS FISHED	CATCH RATE	YELLOWFIN	SKIPJACK	BIGEYE	ALBACORE	TOTAL	CUMUL TOTAL	
Jan	2	2	59	20.41	1009(84)	155(13)	40(3)	0(0)	1204	1204	
Feb	2	2	26	24.81	531(82)	57(9)	30(5)	26(4)	645	1849	
Mar	2	1	22	14.18	84(27)	198(63)	31(10)	0(0)	312	2161	
Apr	2	1	30	8.70	58(22)	194(74)	9(3)	0(0)	261	2422	
May	2	1	28	32.32	71(8)	818(90)	15(2)	0(0)	905	3327	
Jun	2	1	24	4.54	21(19)	77(71)	11(10)	0(0)	109	3436	
-----					189	18.18	1774(51)	1499(43)	136(3)	26(0)	3436

TABLE 3. Purse Seiner Transshipment Statistics by Harbour of Transshipment
 Database closed on 01/11/06
 (Units: MT)

Port: VICTORIA, SEYCHELLES Year: 2005

MONTH	No. OF						TOTAL	CUMUL TOTAL
	SEINERS	YELLOWFIN	SKIPJACK	BIGEYE	ALBACORE	OTHERS		
Jan	41	21723	5802	1548	23	24	29122	29122
Feb	41	25993	7779	1987	31	35	35826	64948
Mar	38	5652	15473	1747	44	129	23045	87993
Apr	37	2803	9313	626	0	25	12765	100758
May	34	2428	10185	315	0	4	12932	113690
Jun	43	6363	5226	465	10	10	12075	125765
Jul	43	14741	11068	1882	19	13	27721	153486
Aug	44	10655	23801	1990	0	244	36691	190177
Sep	45	19151	20817	2684	2	19	42675	232852
Oct	45	16221	33230	3289	0	102	52843	285695
Nov	44	18631	16234	2287	0	0	37151	322846
Dec	45	11151	5162	504	7	17	16840	339686
Total		155512	164090	19324	136	622	339686	

Port: VICTORIA, SEYCHELLES Year: 2006

MONTH	No. OF						TOTAL	CUMUL TOTAL
	SEINERS	YELLOWFIN	SKIPJACK	BIGEYE	ALBACORE	OTHERS		
Jan	47	27919	4487	1217	300	1	33924	33924
Feb	48	18869	6137	1768	558	32	27365	61289
Mar	45	11663	17373	2293	56	204	31588	92877
Apr	46	5193	11254	919	0	96	17464	110341
May	43	1325	13457	437	0	5	15223	125564
Jun	47	8857	4951	1977	163	9	15959	141523
Total		73826	57659	8611	1077	347	141523	

Port: DIEGO SUAREZ, MADAGASCAR Year: 2005

MONTH	No. OF						TOTAL	CUMUL TOTAL
	SEINERS	YELLOWFIN	SKIPJACK	BIGEYE	ALBACORE	OTHERS		
Jan	1	231	22	8	0	0	261	261
Feb	7	3247	1502	185	0	0	4934	5195
Mar	10	218	787	60	0	0	1065	6260
Apr	21	1170	4656	305	0	16	6148	12408
May	21	1550	6672	241	1	26	8491	20899
Jun	3	1	9	0	0	0	10	20909
Jul	0	0	0	0	0	0	0	20909
Aug	0	0	0	0	0	0	0	20909
Sep	0	0	0	0	0	0	0	20909
Oct	1	0	0	0	0	0	0	20909
Nov	0	0	0	0	0	0	0	20909
Dec	0	0	0	0	0	0	0	20909
Total		6417	13648	799	1	42	20909	

Port: DIEGO SUAREZ, MADAGASCAR Year: 2006

MONTH	No. OF						TOTAL	CUMUL TOTAL
	SEINERS	YELLOWFIN	SKIPJACK	BIGEYE	ALBACORE	OTHERS		
Jan	1	0	0	0	0	0	0	0
Feb	5	630	261	84	28	0	1003	1003
Mar	7	371	1361	162	0	12	1905	2908
Apr	5	114	948	71	0	0	1133	4041
May	3	18	304	11	0	0	333	4374
Jun	0	0	0	0	0	0	0	4374
Total		1133	2874	328	28	12	4374	

Port: MOMBASA, KENYA**Year: 2005**

MONTH	No. OF						TOTAL	CUMUL TOTAL
	SEINERS	YELLOWFIN	SKIPJACK	BIGEYE	ALBACORE	OTHERS		
Jan	6	3076	773	197	1	0	4047	4047
Feb	10	2089	261	258	0	0	2606	6653
Mar	3	553	1593	135	0	38	2319	8972
Apr	4	170	498	36	0	0	703	9675
May	3	164	1001	20	0	0	1186	10861
Jun	3	65	107	8	0	1	180	11041
Jul	3	832	241	100	4	0	1178	12219
Aug	5	1211	2128	214	0	13	3567	15786
Sep	4	1096	1312	146	2	0	2556	18342
Oct	5	1020	820	307	0	0	2147	20489
Nov	3	1306	1252	135	0	2	2695	23184
Dec	1	0	0	0	0	0	0	23184
Total		11582	9986	1556	7	54	23184	

Port: MOMBASA, KENYA**Year: 2006**

MONTH	No. OF						TOTAL	CUMUL TOTAL
	SEINERS	YELLOWFIN	SKIPJACK	BIGEYE	ALBACORE	OTHERS		
Jan	1	495	79	47	0	0	621	621
Feb	1	0	0	0	0	0	0	621
Mar	0	0	0	0	0	0	0	621
Apr	2	177	323	17	0	0	517	1138
May	2	5	92	3	0	0	100	1238
Jun	2	728	6	113	0	0	847	2085
Total		1405	500	180	0	0	2085	

Port: PORT LOUIS, MAURITIUS**Year: 2005**

MONTH	No. OF						TOTAL	CUMUL TOTAL
	SEINERS	YELLOWFIN	SKIPJACK	BIGEYE	ALBACORE	OTHERS		
Jan	0	0	0	0	0	0	0	0
Feb	0	0	0	0	0	0	0	0
Mar	0	0	0	0	0	0	0	0
Apr	3	153	471	39	0	0	663	663
May	2	199	1095	46	0	0	1340	2003
Jun	0	0	0	0	0	0	0	2003
Jul	0	0	0	0	0	0	0	2003
Aug	0	0	0	0	0	0	0	2003
Sep	0	0	0	0	0	0	0	2003
Oct	3	433	327	49	0	0	809	2812
Nov	2	442	371	35	0	0	848	3660
Dec	0	0	0	0	0	0	0	3660
Total		1227	2264	169	0	0	3660	

Port: PORT LOUIS, MAURITIUS**Year: 2006**

MONTH	No. OF						TOTAL	CUMUL TOTAL
	SEINERS	YELLOWFIN	SKIPJACK	BIGEYE	ALBACORE	OTHERS		
Jan	1	0	0	0	0	0	0	0
Feb	1	21	11	5	0	0	37	37
Mar	2	62	183	25	0	0	270	307
Apr	2	72	392	24	0	0	488	795
May	2	1	305	1	0	0	307	1102
Jun	2	85	60	8	1	0	154	1256
Total		241	951	63	1	0	1256	

TABLE 6. Comparative statistics of catch by purse seiners by country in the Western Indian Ocean
Database closed on 01/11/06
(Units: MT)

Year 2005

Month	France	Spain	Seychelles	OTHERS ¹	TOTAL
Jan	9075	13870	9606	879	33430
Feb	10823	19876	12005	661	43365
Mar	8116	11511	6430	371	26428
Apr	7448	8172	3837	821	20278
May	5875	11781	5589	855	24100
Jun	4263	5464	2538	845	13110
Jul	7324	14941	5144	1763	29172
Aug	10569	20167	8749	1163	40648
Sep	13322	21492	9219	1354	45387
Oct	14432	27252	13084	1036	55804
Nov	10093	20972	7560	2069	40694
Dec	5863	6797	3776	404	16840
Total	107203	182295	87537	12221	389256

Year 2006

Month	France	Spain	Seychelles	OTHERS ²	TOTAL
Jan	10224	15469	7648	1204	34545
Feb	9282	13242	5237	645	28406
Mar	9641	18314	5497	312	33764
Apr	7202	10550	2521	261	20534
May	6662	7339	1247	905	16153
Jun	5401	9093	2358	109	16961
Total	48412	74007	24508	3436	150363

¹Since space is a limiting factor in Tables 6, flag country appearing in these tables are included based on their catch totals. The remaining flags are classified under "OTHERS". Flag countries with only one vessel are automatically placed under "OTHERS" to preserve the confidentiality of data pertaining to the vessel. In 2005 "OTHERS" included Iran and Italy.

²For the same reason as in footnote 1 above the class "OTHERS" have been included. In 2006 "OTHERS" included only Iran and Italy.

TABLE 7. Comparative statistics of effort by purse seiners by country in the Western Indian Ocean
Database closed on 01/11/06
(Units: Fishing Day)

Year 2005

Month	France	Spain	Seychelles	OTHERS ¹	TOTAL
Jan	339	521	303	26	1189
Feb	290	439	237	18	984
Mar	370	416	241	42	1069
Apr	368	427	254	51	1100
May	273	491	254	56	1074
Jun	276	531	265	13	1085
Jul	310	543	305	59	1217
Aug	321	520	279	49	1169
Sep	334	518	257	43	1152
Oct	309	506	240	39	1094
Nov	272	424	211	57	964
Dec	384	576	246	50	1256
Total	3846	5912	3092	503	13353

Year 2006

Month	France	Spain	Seychelles	OTHERS ²	TOTAL
Jan	329	570	265	59	1223
Feb	404	524	209	26	1163
Mar	408	550	188	22	1168
Apr	378	510	199	30	1117
May	435	528	188	28	1179
Jun	407	538	197	24	1166
Total	2361	3220	1246	189	7016

¹See footnote of Table 6.

²See footnote of Table 6.

TABLE 8. Comparative CPUE of purse seiners by country in the Western Indian Ocean
Database closed on 01/11/06
(Units: MT/Fishing Day)

Year 2005

Month	France	Spain	Seychelles	OTHERS ¹	TOTAL
Jan	26.77	26.62	31.70	33.81	28.12
Feb	37.32	45.28	50.65	36.72	44.07
Mar	21.94	27.67	26.68	8.83	24.72
Apr	20.24	19.14	15.11	16.10	18.43
May	21.52	23.99	22.00	15.27	22.44
Jun	15.45	10.29	9.58	65.00	12.08
Jul	23.63	27.52	16.87	29.88	23.97
Aug	32.93	38.78	31.36	23.73	34.77
Sep	39.89	41.49	35.87	31.49	39.40
Oct	46.71	53.86	54.52	26.56	51.01
Nov	37.11	49.46	35.83	36.30	42.21
Dec	15.27	11.80	15.35	8.08	13.41
Average	27.87	30.83	28.31	24.30	29.15

Year 2006

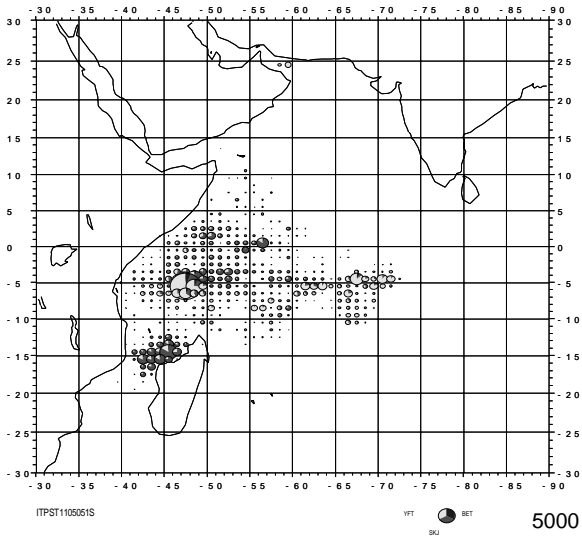
Month	France	Spain	Seychelles	OTHERS ²	TOTAL
Jan	31.08	27.14	28.86	20.41	28.25
Feb	22.98	25.27	25.06	24.81	24.42
Mar	23.63	33.30	29.24	14.18	28.91
Apr	19.05	20.69	12.67	8.70	18.38
May	15.31	13.90	6.63	32.32	13.70
Jun	13.27	16.90	11.97	4.54	14.55
Average	0.50	22.98	19.67	18.18	21.43

¹See footnote of Table 6.

²See footnote of Table 6.

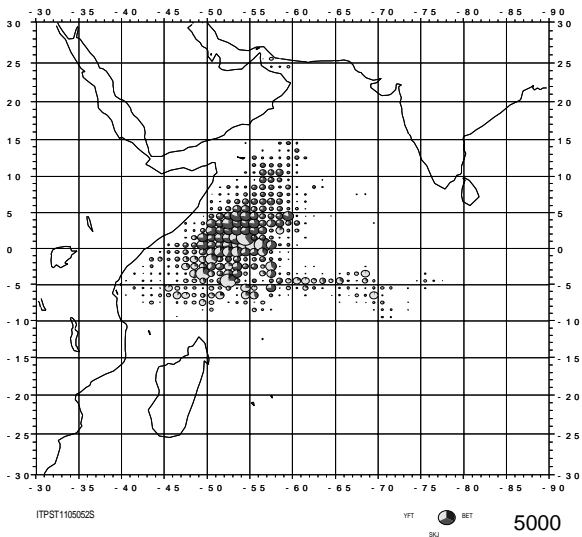
MAP 1. FISHING GROUNDS EXPLOITED BY PURSE SEINERS IN THE WESTERN INDIAN OCEAN BY 1° SQUARE

First Semester 2005



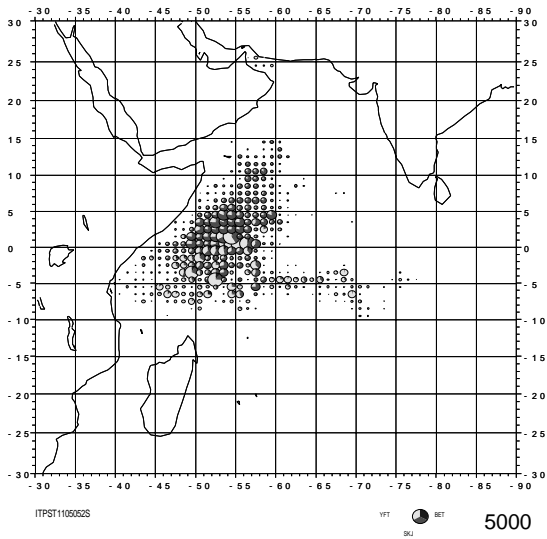
MAP 2. FISHING GROUNDS EXPLOITED BY PURSE SEINERS IN THE WESTERN INDIAN OCEAN BY 1° SQUARE

Second Semester 2005



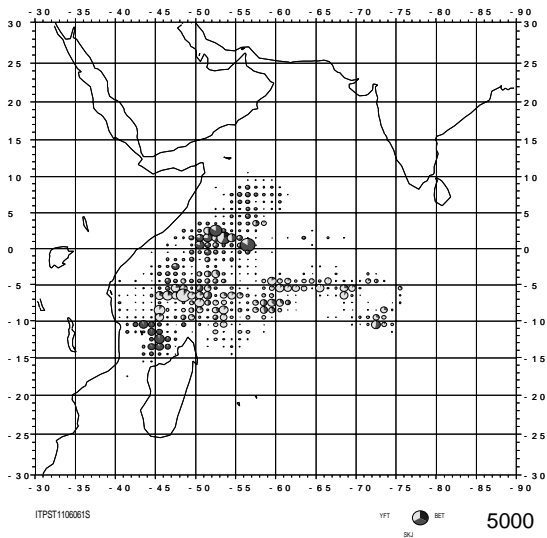
MAP 3. FISHING GROUNDS EXPLOITED BY PURSE SEINERS IN THE WESTERN INDIAN OCEAN BY 1° SQUARE

Whole Year 2005

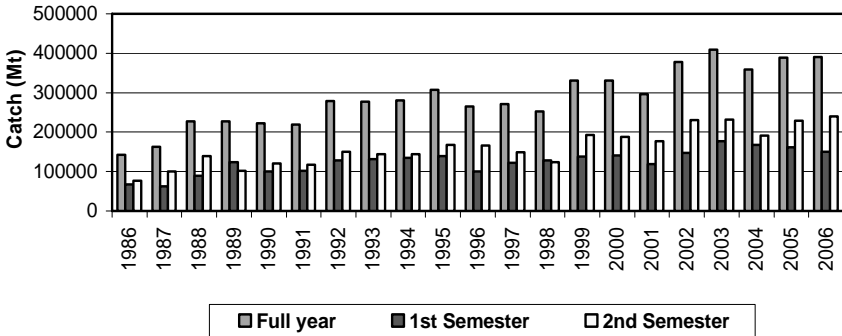


MAP 4. FISHING GROUNDS EXPLOITED BY PURSE SEINERS IN THE WESTERN INDIAN OCEAN BY 1° SQUARE

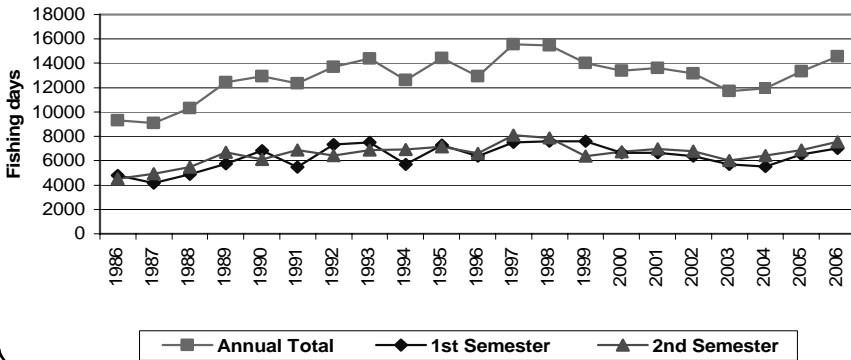
First semester 2006



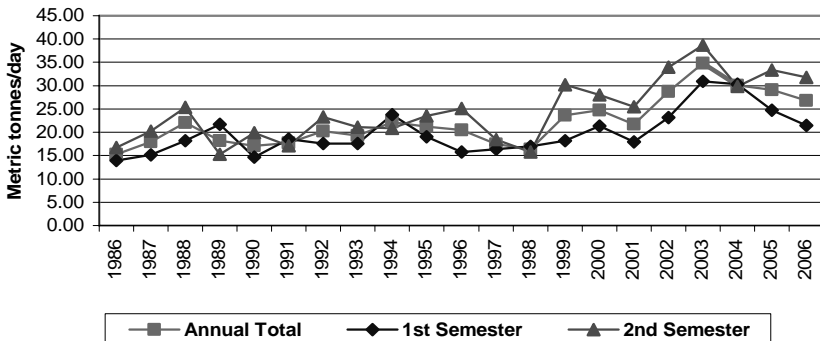
CATCH 1986 - 2006
PURSE SEINERS HOLDING SEYCHELLES LICENCE



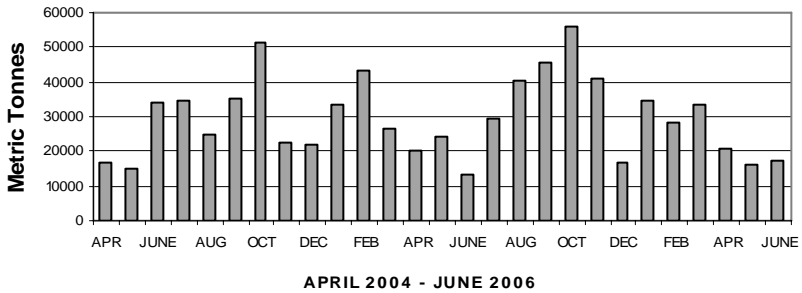
FISHING EFFORT 1997 - 2006
PURSE SEINERS HOLDING SEYCHELLES LICENCE



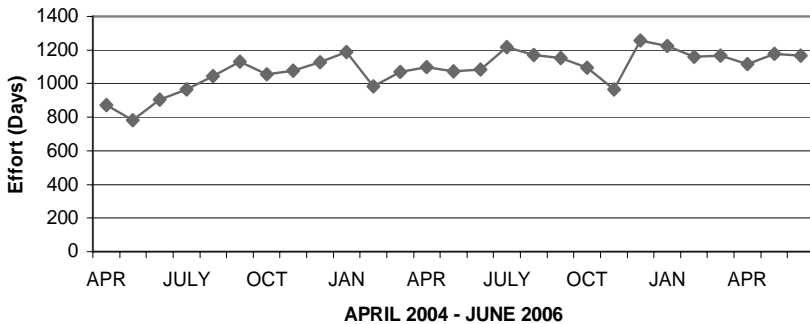
CPUE 1986 - 2006
PURSE SEINERS HOLDING SEYCHELLES LICENCE



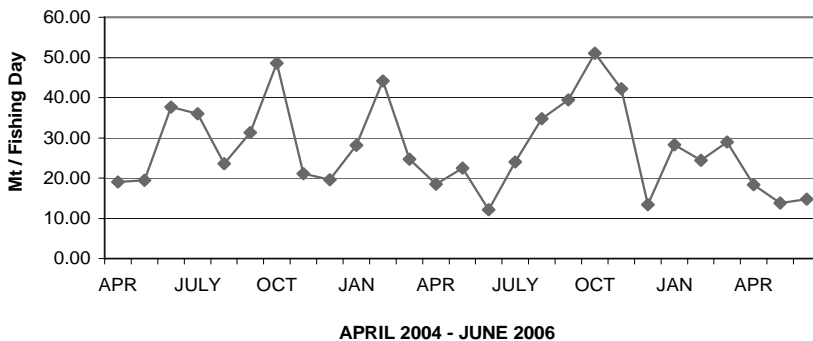
WIO CATCH: APRIL 2004 TO JUNE 2006
PURSE SEINERS



WIO EFFORT: APRIL 2004 TO JUNE 2006
PURSE SEINERS



WIO CPUE : APRIL 2004 TO JUNE 2006
PURSE SEINERS



Longline

Table 9 provides the summary of catch and effort reported by longliners licensed to operate inside of the Seychelles EEZ for the whole year 2004 and first semester 2005.

Tables 10.1, 10.2, 10.3, 10.4, and 10.5 show the longliners' catch for the Seychelles, Japan, Taiwan POC, China and Republic of South Korea, respectively.

Graphs "CATCH: April 2003 to June 2005", "EFFORT: April 2003 to June 2005" and "CPUE:April 2003 to June 2005" illustrate the catch, effort and CPUE of longliners for the mentioned period.

Maps 5 and 6 show the distribution of reported catch of longliners by 1° square in the WIO for the first and second semester of 2004 respectively.

Maps 7 and 8 illustrate the distribution of reported catches of longliners for the whole of 2004 and first semester of 2005 respectively.

TABLE 9.0

Summary of longliner catch in the Western Indian Ocean

Database closed on 01/11/06

(Units: catch Mt, percentage in brackets, catch rates Mt/1000 hooks)

Year: 2004

MONTH	VESSELS LICENSED	VESSELS COVERED	HOOKS	CATCH RATE	YELLOWFIN	BIGEYE	SWORDFISH	OTHERS	TOTAL	CUMUL TOTAL	
Jan	178	123	6202050	.38	872(37)	1174(50)	186(8)	133(6)	2366	2366	
Feb	164	65	2404145	.44	363(34)	479(45)	151(14)	70(7)	1062	3428	
Mar	141	56	2982665	.45	531(40)	592(45)	125(9)	78(6)	1329	4757	
Apr	125	54	2963930	.61	851(47)	745(41)	134(7)	78(4)	1807	6564	
May	101	37	2616786	.74	1116(58)	544(28)	172(9)	96(5)	1927	8491	
Jun	100	57	2470239	.55	679(50)	406(30)	144(11)	140(10)	1369	9860	
Jul	72	28	1800425	.43	99(13)	451(59)	128(17)	87(11)	766	10626	
Aug	89	40	2338126	.44	189(18)	614(59)	144(14)	85(8)	1032	11658	
Sep	121	77	4248369	.37	383(24)	979(61)	114(7)	116(7)	1593	13251	
Oct	130	87	4139245	.36	368(25)	879(59)	123(8)	109(7)	1480	14731	
Nov	156	105	6111202	.47	986(34)	1551(54)	185(6)	146(5)	2869	17600	
Dec	181	123	6402762	.58	1482(40)	1991(53)	150(4)	114(3)	3736	21336	
				44679944	.48	7919(37)	10405(48)	1756(8)	1252(5)	21336	

Year: 2005

MONTH	VESSELS LICENSED	VESSELS COVERED	HOOKS	CATCH RATE	YELLOWFIN	BIGEYE	SWORDFISH	OTHERS	TOTAL	CUMUL TOTAL	
Jan	183	48	2889824	.58	666(40)	847(51)	100(6)	55(3)	1666	1666	
Feb	172	44	2260034	.60	822(61)	417(31)	72(5)	43(3)	1355	3021	
Mar	152	30	2243425	.76	1251(73)	356(21)	60(4)	40(2)	1707	4728	
Apr	130	27	2050819	1.14	1680(72)	523(22)	75(3)	50(2)	2329	7057	
May	110	31	2381977	.97	1708(74)	430(19)	116(5)	48(2)	2303	9360	
Jun	95	27	1496830	.63	481(51)	327(35)	86(9)	48(5)	942	10302	
				13322909	.77	6608(64)	2900(28)	509(4)	284(2)	10302	

TABLE 10.1 Summary of longliner catch in the Western Indian Ocean
Database closed on 01/11/06
(Units: catch Mt, percentage in brackets, catch rates Mt/1000 hooks)

Country: SEYCHELLES

Year: 2004

MONTH	VESSELS LICENSED	VESSELS COVERED	HOOKS	CATCH RATE	YELLOWFIN	BIGEYE	SWORDFISH	OTHERS	TOTAL	CUMUL TOTAL	
Jan	10	16	1018750	.55	118(21)	351(62)	68(12)	26(5)	563	563	
Feb	10	17	1101744	.52	133(23)	292(51)	117(20)	31(5)	573	1136	
Mar	7	18	1330720	.56	257(35)	341(46)	100(14)	41(6)	739	1875	
Apr	7	19	1442650	.73	531(51)	391(37)	79(8)	45(4)	1046	2921	
May	7	19	1468461	.85	710(57)	368(30)	107(9)	62(5)	1247	4168	
Jun	8	22	1290361	.62	323(40)	287(36)	112(14)	81(10)	803	4971	
Jul	7	22	1512123	.45	82(12)	397(58)	120(18)	82(12)	681	5652	
Aug	7	23	1661672	.48	97(12)	511(64)	132(17)	59(7)	799	6451	
Sep	12	23	1585475	.43	112(17)	466(69)	73(11)	26(4)	677	7128	
Oct	12	23	1576368	.41	119(18)	422(65)	72(11)	32(5)	645	7773	
Nov	13	23	1777155	.59	244(23)	643(61)	113(11)	51(5)	1051	8824	
Dec	14	24	1870743	.63	306(26)	747(64)	78(7)	42(4)	1174	9998	
				17636222	.57	3032(30)	5216(52)	1171(11)	578(5)	9998	

Country: SEYCHELLES

Year: 2005

MONTH	VESSELS LICENSED	VESSELS COVERED	HOOKS	CATCH RATE	YELLOWFIN	BIGEYE	SWORDFISH	OTHERS	TOTAL	CUMUL TOTAL	
Jan	14	23	1855226	.63	371(32)	677(58)	88(8)	31(3)	1167	1167	
Feb	13	22	1412555	.73	631(61)	315(30)	62(6)	26(3)	1033	2200	
Mar	12	22	1714240	.87	1131(76)	282(19)	51(3)	29(2)	1493	3693	
Apr	11	22	1712794	1.24	1552(73)	459(22)	65(3)	42(2)	2119	5812	
May	11	23	1970341	1.04	1529(75)	368(18)	105(5)	39(2)	2041	7853	
Jun	9	22	1220080	.62	373(49)	282(37)	80(11)	25(3)	760	8613	
				9885236	.87	5587(64)	2383(27)	451(5)	192(2)	8613	

TABLE 10.2 Summary of longliner catch in the Western Indian Ocean
Database closed on 01/11/06
(Units: catch Mt, percentage in brackets, catch rates Mt/1000 hooks)

Country: JAPAN

Year: 2004

MONTH	VESSELS LICENSED	VESSELS COVERED	HOOKS	CATCH RATE	YELLOWFIN	BIGEYE	SWORDFISH	OTHERS	TOTAL	CUMUL TOTAL	
Jan	33	15	895942	.43	267(70)	78(20)	14(4)	24(6)	384	384	
Feb	29	10	380920	.49	130(70)	35(19)	4(2)	17(9)	186	570	
Mar	25	6	431880	.48	150(72)	42(20)	4(2)	11(5)	209	779	
Apr	30	10	624450	.52	190(59)	104(32)	13(4)	18(6)	324	1103	
May	20	8	710345	.62	314(71)	74(17)	28(6)	26(6)	441	1544	
Jun	20	10	603088	.60	260(72)	44(12)	11(3)	48(13)	363	1907	
Jul	9	1	85500	.20	8(47)	6(35)	1(6)	2(12)	17	1924	
Aug	16	8	316444	.43	75(56)	34(25)	5(4)	21(16)	135	2059	
Sep	21	11	670805	.38	117(46)	74(29)	8(3)	53(21)	252	2311	
Oct	26	14	775026	.38	153(52)	88(30)	13(4)	38(13)	293	2604	
Nov	35	21	1395209	.47	395(61)	187(29)	20(3)	48(7)	649	3253	
Dec	39	19	1100924	.74	566(70)	204(25)	17(2)	27(3)	814	4067	
				7990533	.51	2625(64)	970(23)	138(3)	333(8)	4067	

Country: JAPAN

Year: 2005

MONTH	VESSELS LICENSED	VESSELS COVERED	HOOKS	CATCH RATE	YELLOWFIN	BIGEYE	SWORDFISH	OTHERS	TOTAL	CUMUL TOTAL	
Jan	39	16	640347	.55	233(66)	96(27)	7(2)	17(5)	352	352	
Feb	40	15	681057	.39	170(63)	78(29)	7(3)	12(4)	268	620	
Mar	36	8	529185	.40	120(56)	74(35)	9(4)	11(5)	214	834	
Apr	28	5	338025	.62	128(61)	64(30)	10(5)	8(4)	210	1044	
May	21	7	397136	.64	176(69)	60(24)	9(4)	8(3)	254	1298	
Jun	20	5	276750	.66	108(59)	45(25)	6(3)	23(13)	182	1480	
				2862500	.52	935(63)	417(28)	48(3)	79(5)	1480	

TABLE 10.3 Summary of longliner catch in the Western Indian Ocean
Database closed on 01/11/06
(Units: catch Mt, percentage in brackets, catch rates Mt/1000 hooks)

Country: TAIWAN POC Year: 2004

MONTH	VESSELS LICENSED	VESSELS COVERED	HOOKS	CATCH RATE	YELLOWFIN	BIGEYE	SWORDFISH	OTHERS	TOTAL	CUMUL TOTAL	
Jan	116	74	3486052	.33	384(33)	619(53)	92(8)	67(6)	1161	1161	
Feb	106	24	569870	.31	52(29)	94(53)	20(11)	12(7)	177	1338	
Mar	103	31	1175065	.32	121(32)	205(55)	21(6)	26(7)	374	1712	
Apr	86	24	843630	.49	125(30)	237(57)	38(9)	15(4)	415	2127	
May	75	9	427180	.55	90(38)	101(43)	37(16)	8(3)	236	2363	
Jun	72	23	521790	.33	94(54)	55(32)	15(9)	10(6)	174	2537	
Jul	56	2	47750	.10	1(20)	3(60)	1(20)	0(0)	5	2542	
Aug	65	6	207160	.24	12(24)	33(67)	2(4)	3(6)	49	2591	
Sep	85	39	1749789	.33	138(24)	386(66)	27(5)	33(6)	584	3175	
Oct	88	46	1555051	.30	82(17)	327(69)	33(7)	32(7)	473	3648	
Nov	102	56	2853238	.39	336(30)	692(62)	50(4)	43(4)	1121	4769	
Dec	107	66	2957984	.52	510(33)	925(61)	51(3)	41(3)	1526	6295	
					16394559	.38	1945(30)	3677(58)	387(6)	290(4)	6295

Country: TAIWAN POC Year: 2005

MONTH	VESSELS LICENSED	VESSELS COVERED	HOOKS	CATCH RATE	YELLOWFIN	BIGEYE	SWORDFISH	OTHERS	TOTAL	CUMUL TOTAL	
Jan	106	4	89360	.38	10(29)	22(65)	0(0)	2(6)	34	34	
Feb	97	2	36960	.32	3(25)	8(67)	0(0)	0(0)	12	46	
Mar	95	0	0	.00	0(0)	0(0)	0(0)	0(0)	0	46	
Apr	85	0	0	.00	0(0)	0(0)	0(0)	0(0)	0	46	
May	73	1	14500	.55	3(38)	2(25)	2(25)	1(13)	8	54	
Jun	63	0	0	.00	0(0)	0(0)	0(0)	0(0)	0	54	
					140820	.38	16(29)	32(59)	2(3)	3(5)	54

TABLE 10.4 Summary of longliner catch in the Western Indian Ocean
Database closed on 01/11/06
(Units: catch Mt, percentage in brackets, catch rates Mt/1000 hooks)

Country: CHINA

Year: 2004

MONTH	VESSELS LICENSED	VESSELS COVERED	HOOKS	CATCH RATE	YELLOWFIN	BIGEYE	SWORDFISH	OTHERS	TOTAL	CUMUL TOTAL
Jan	9	3	27000	.19	4(80)	1(20)	0(0)	0(0)	5	5
Feb	9	1	9000	.11	0(0)	1(100)	0(0)	0(0)	1	6
Mar	9	1	45000	.16	3(43)	4(57)	0(0)	0(0)	7	13
Apr	4	0	0	.00	0(0)	0(0)	0(0)	0(0)	0	13
May	2	1	10800	.28	2(67)	1(33)	0(0)	0(0)	3	16
Jun	3	1	10000	.20	1(50)	0(0)	0(0)	1(50)	2	18
Jul	3	1	62500	.48	5(17)	21(70)	2(7)	2(7)	30	48
Aug	4	1	62500	.22	0(0)	10(71)	2(14)	1(7)	14	62
Sep	6	3	160300	.28	14(31)	25(56)	2(4)	4(9)	45	107
Oct	7	3	149800	.26	9(23)	20(51)	2(5)	7(18)	39	146
Nov	9	4	36800	.41	4(27)	5(33)	1(7)	4(27)	15	161
Dec	10	5	149100	.36	30(56)	23(43)	1(2)	1(2)	54	215
			722800	.30	72(33)	111(51)	10(4)	20(9)	215	

Country: CHINA

Year: 2005

MONTH	VESSELS LICENSED	VESSELS COVERED	HOOKS	CATCH RATE	YELLOWFIN	BIGEYE	SWORDFISH	OTHERS	TOTAL	CUMUL TOTAL
Jan	9	0	0	.00	0(0)	0(0)	0(0)	0(0)	0	0
Feb	9	0	0	.00	0(0)	0(0)	0(0)	0(0)	0	0
Mar	9	0	0	.00	0(0)	0(0)	0(0)	0(0)	0	0
Apr	9	0	0	.00	0(0)	0(0)	0(0)	0(0)	0	0
May	8	0	0	.00	0(0)	0(0)	0(0)	0(0)	0	0
Jun	6	0	0	.00	0(0)	0(0)	0(0)	0(0)	0	0
			0	.00	0(0)	0(0)	0(0)	0(0)	0	

TABLE 10.5 Summary of longliner catch in the Western Indian Ocean
Database closed on 01/11/06
(Units: catch Mt, percentage in brackets, catch rates Mt/1000 hooks)

Country: REPUBLIC OF SOUTH KOREA Year: 2004

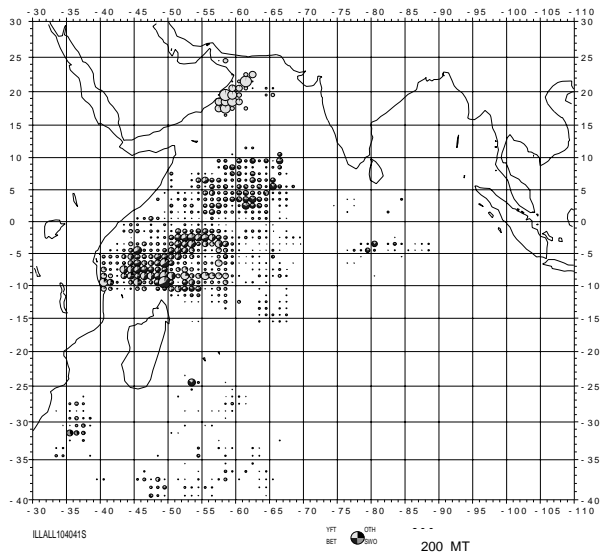
MONTH	VESSELS LICENSED	VESSELS COVERED	HOOKS	CATCH RATE	YELLOWFIN	BIGEYE	SWORDFISH	OTHERS	TOTAL	CUMUL TOTAL
Jan	14	15	774306	.33	99(39)	125(49)	12(5)	16(6)	253	253
Feb	14	13	342611	.36	48(38)	57(46)	10(8)	10(8)	125	378
Mar	1	0	0	.00	0(0)	0(0)	0(0)	0(0)	0	378
Apr	2	1	53200	.41	5(23)	13(59)	4(18)	0(0)	22	400
May	1	0	0	.00	0(0)	0(0)	0(0)	0(0)	0	400
Jun	1	1	45000	.60	1(4)	20(74)	6(22)	0(0)	27	427
Jul	1	2	92552	.36	3(9)	24(73)	4(12)	1(3)	33	460
Aug	1	2	90350	.39	5(14)	26(74)	3(9)	1(3)	35	495
Sep	1	1	82000	.43	2(6)	28(80)	4(11)	0(0)	35	530
Oct	1	1	83000	.36	5(17)	22(73)	3(10)	0(0)	30	560
Nov	1	1	48800	.68	7(21)	24(73)	1(3)	0(0)	33	593
Dec	15	9	324011	.52	70(42)	92(55)	3(2)	3(2)	168	761
			1935830	.39	245(32)	431(56)	50(6)	31(4)	761	

Country: REPUBLIC OF SOUTH KOREA Year: 2005

MONTH	VESSELS LICENSED	VESSELS COVERED	HOOKS	CATCH RATE	YELLOWFIN	BIGEYE	SWORDFISH	OTHERS	TOTAL	CUMUL TOTAL
Jan	19	5	304891	.37	52(46)	52(46)	5(4)	5(4)	113	113
Feb	17	5	129462	.32	18(43)	16(38)	3(7)	5(12)	42	155
Mar	4	0	0	.00	0(0)	0(0)	0(0)	0(0)	0	155
Apr	1	0	0	.00	0(0)	0(0)	0(0)	0(0)	0	155
May	1	0	0	.00	0(0)	0(0)	0(0)	0(0)	0	155
Jun	1	0	0	.00	0(0)	0(0)	0(0)	0(0)	0	155
			434353	.36	70(45)	68(43)	8(5)	10(6)	155	

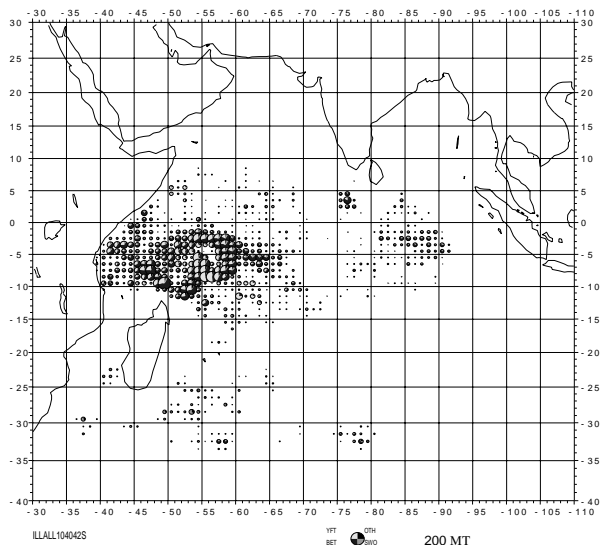
MAP 5. FISHING GROUNDS EXPLOITED BY LONGLINERS IN THE WESTERN INDIAN OCEAN BY 1° SQUARE

First Semester 2004



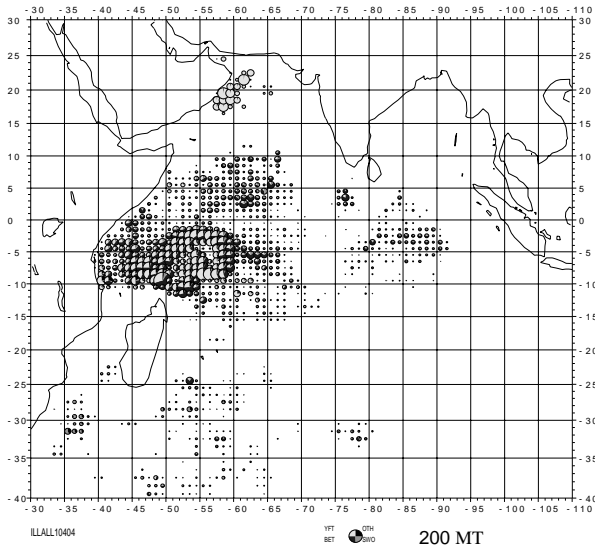
MAP 6. FISHING GROUNDS EXPLOITED BY LONGLINERS IN THE WESTERN INDIAN OCEAN BY 1° SQUARE

Second Semester 2004



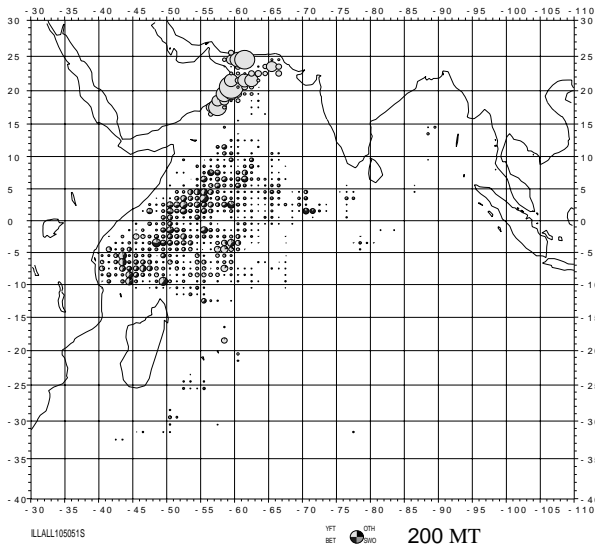
MAP 7. FISHING GROUNDS EXPLOITED BY LONGLINERS IN THE WESTERN INDIAN OCEAN BY 1° SQUARE

Whole Year 2004

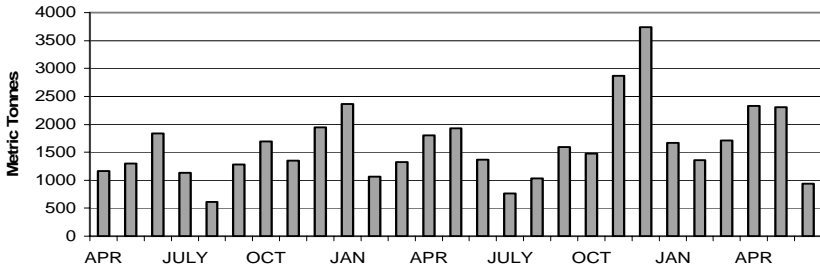


MAP 8. FISHING GROUNDS EXPLOITED BY LONGLINERS IN THE WESTERN INDIAN OCEAN BY 1° SQUARE

First Semester 2005

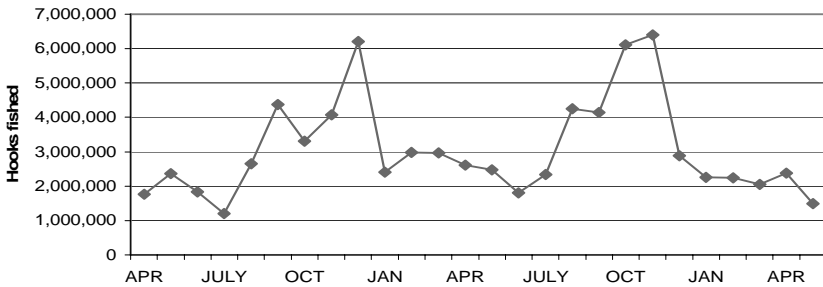


**CATCH: LAST 27 MONTHS
ALL LONGLINERS LICENSED IN SEYCHELLES**



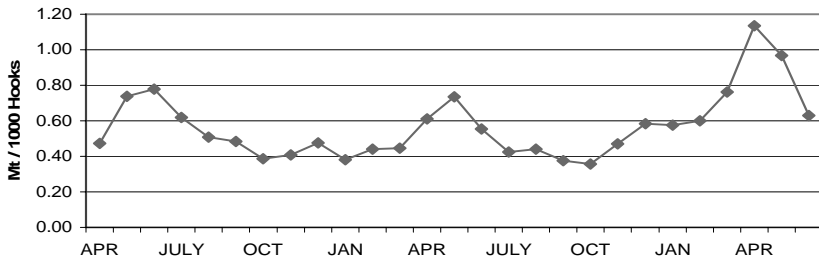
APRIL 2003 - JUNE 2005

**EFFORT: LAST 27 MONTHS
ALL LONGLINERS LICENSED IN SEYCHELLES**



APRIL 2003 - JUNE 2005

**CPUE : LAST 27 MONTHS
ALL LONGLINERS LICENSED IN SEYCHELLES**



APRIL 2003 - JUNE 2005

