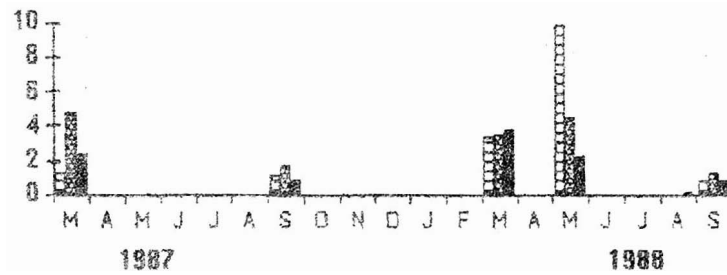
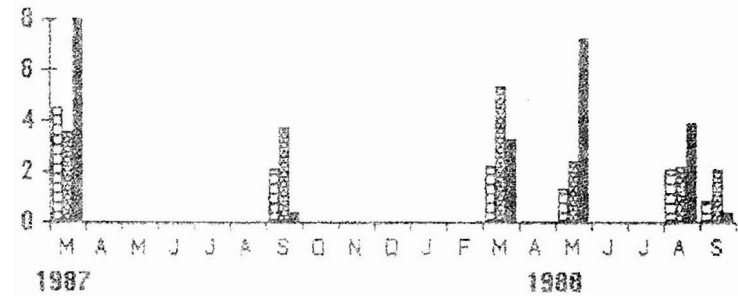


Figure n° 20: Indices d'abondance (kg/30 min) par zone des principaux représentants de la communauté du rebord du plateau en 1987 et 1988.

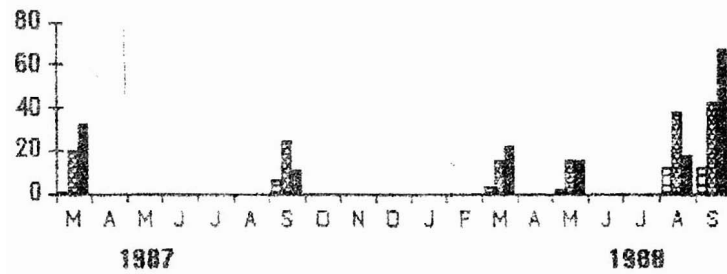
*Zeus faber*



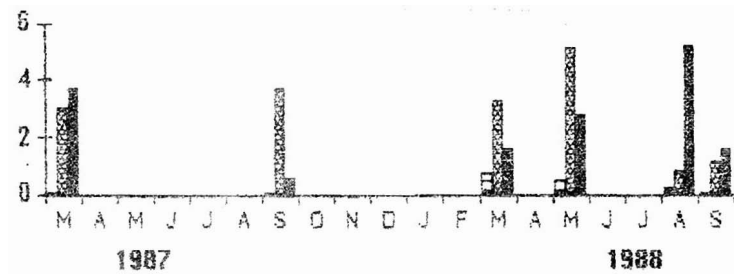
*Edinephelus aeneus*



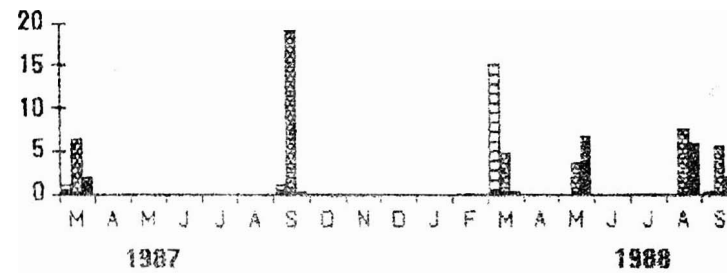
*Pagellus bellottii*



*Dentex canariensis*



*Plectorhynchus mediterraneus*



*Mustelus mustelus*

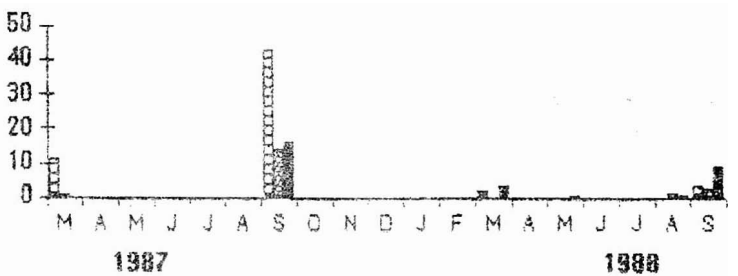


Figure n° 21: Indices d'abondance spécifiques (kg/30 min) par zone en 1987 et 1988.

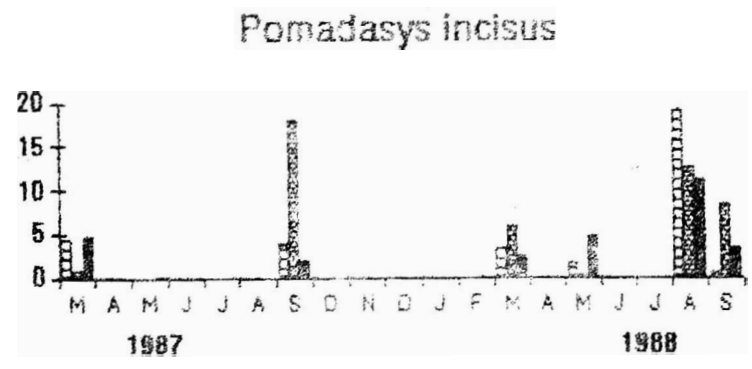
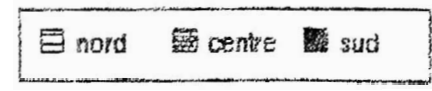
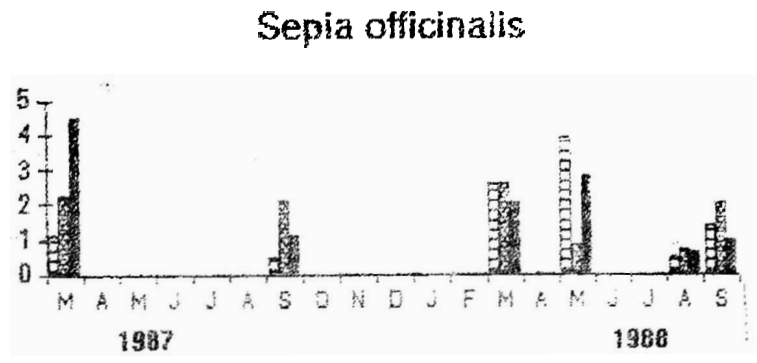
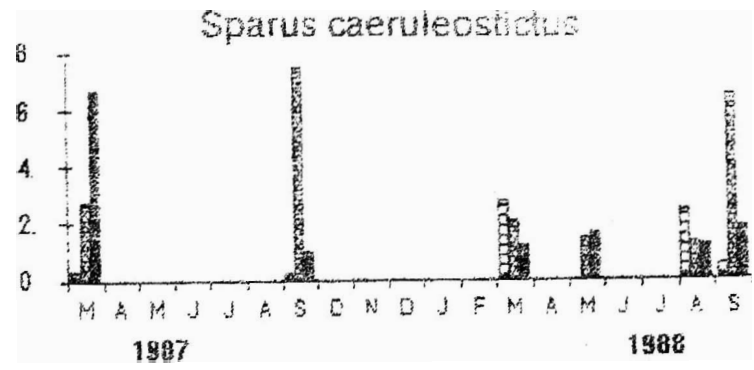
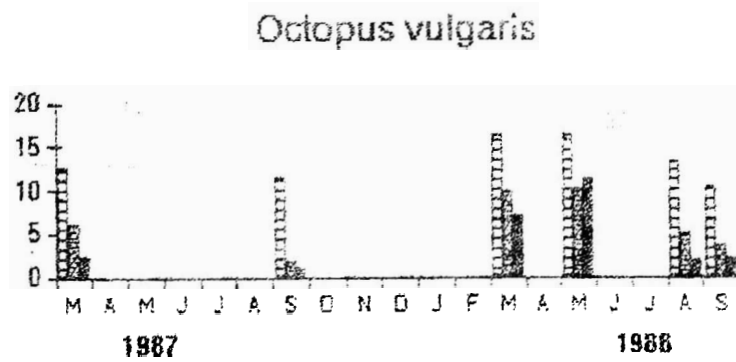


Figure n° 22: Indices d'abondance spécifiques (kg/30 min) par zone en 1987 et 1988.

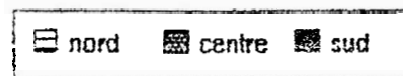
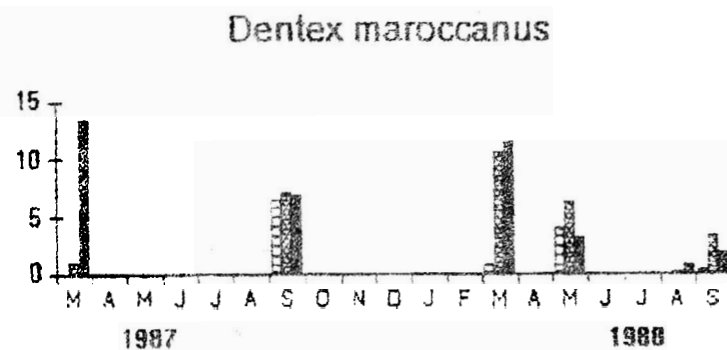
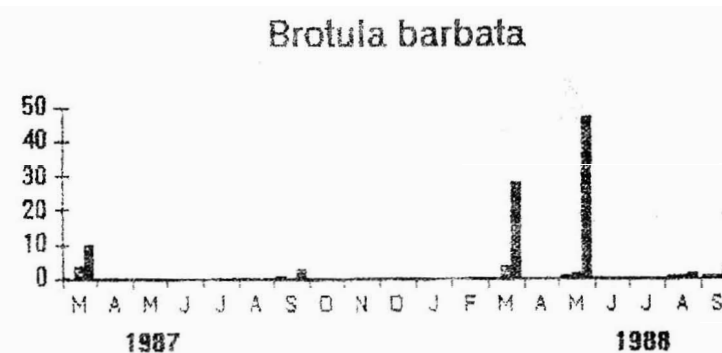
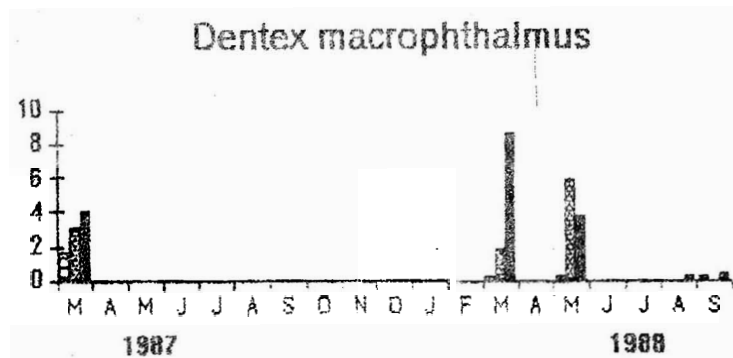
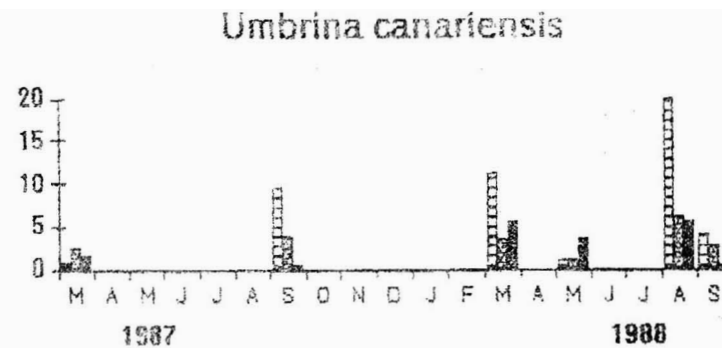
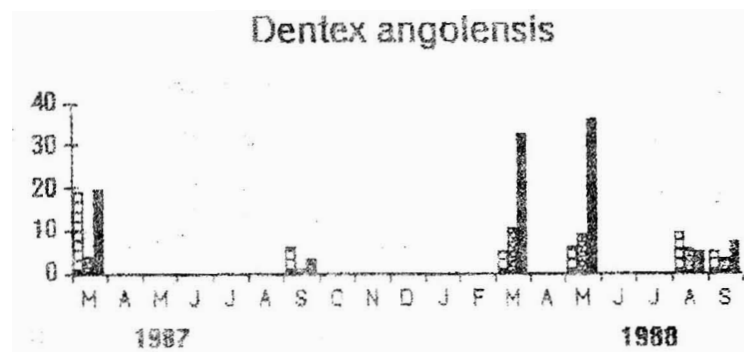


Figure n° 23: Indices d'abondance spécifiques (kg/30 min) par zone en 1987 et 1988.